



## PLH60 - Lincat Panther Light Duty Series Free-standing Hot Cupboard - Static - W 600 mm - 1.5 kW

The compact Panther Light Duty Series Hot Cupboard, which can also be used for warming plates, comes fully insulated for enhanced energy-efficiency, while there's also an adjustable thermostatic control to meet food safety regulations.

- ✔ Ideal for warming plates and for holding food safely and effectively at the desired temperatures
- ✔ Fully insulated for enhanced energy-efficiency
- ✔ Adjustable thermostatic control to meet food safety regulations
- ✔ Compact, space saving design

### Specifications

#### Summary

<b>Brand</b>	Lincat
<b>Range</b>	Panther
<b>Series</b>	Light Duty
<b>Power Type</b>	Electric
<b>Unit Type</b>	Free-standing
<b>Available in UK Only</b>	No
<b>UK Warranty</b>	2 Years Parts and Labour Warranty
<b>Export Warranty</b>	Contact your local dealer
<b>GTIN</b>	5056105103653

#### Power and Performance

<b>Total Power kW</b>	1.50
<b>Temperature Range °C</b>	30-90
<b>IP Rating</b>	IP24
<b>Temperature Control</b>	Mechanical

#### Key Specifications

<b>Number of Shelves included</b>	3
<b>Number of Shelf Positions</b>	3
<b>Heated Base</b>	Yes
<b>Heated Gantry</b>	No
<b>Static or Mobile</b>	Static

#### Weights and Dimensions

<b>Unit Height (External) mm</b>	900
<b>Unit Width (External) mm</b>	600
<b>Unit Depth (External) mm</b>	600
<b>Height (Internal) mm</b>	700
<b>Width (Internal) mm</b>	555
<b>Depth (Internal) mm</b>	530
<b>Shelf Dimensions Width mm</b>	550
<b>Shelf Dimensions Depth mm</b>	530
<b>Net Weight Kg</b>	48

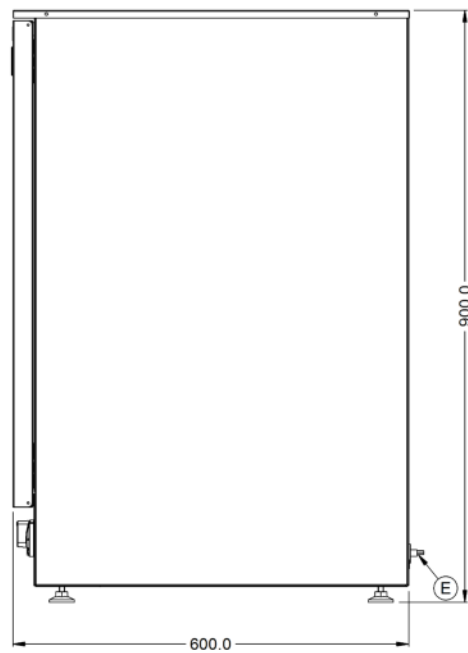
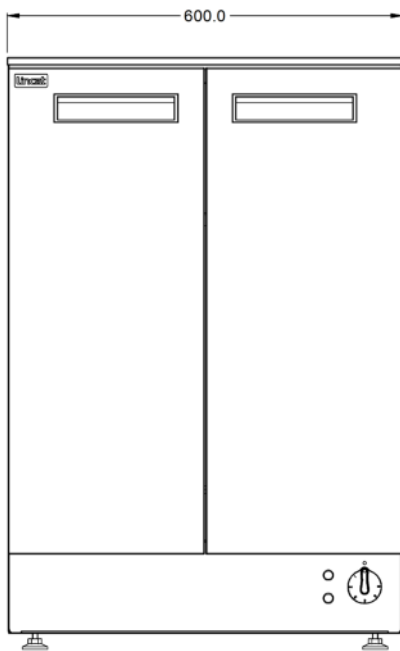
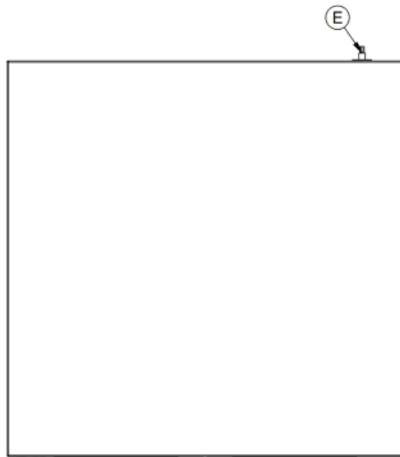
#### Supply Connections

<b>Requires Installation</b>	No
<b>Requires Electrical Supply</b>	Yes
<b>UK 3 Pin Plug</b>	Yes
<b>Requires Hardwiring</b>	No
<b>Electrical Supply Rating Watts</b>	1,500
<b>Single Phase Amps</b>	6.5
<b>Single Phase Voltage</b>	230

#### Shipping

<b>Packed Weight Kg</b>	60
<b>Packed Height cm</b>	110
<b>Packed Width cm</b>	78
<b>Packed Depth cm</b>	78

### Technical Picture



#### Lincat Limited

Whisby Road,  
Lincoln, LN6 3QZ,  
United Kingdom

**Company No:** 2175448

A member company of



#### Customer Care

**Tel:** +44 1522 875500  
**Email:** care@lincat.co.uk

#### Export Customers

**Tel:** +44 1522 875536  
**Email:** export@lincat.co.uk

#### Opening Hours

**Monday – Friday:**  
8.30am – 5pm